

PRODUCT INFORMATION



Roadmarking & Post Marker Paints

POST MARKER PAINT - YELLOW

Water based flexible acrylic coating, provides durable long lasting protection. Ideal for identification and safety marking applications. No Primer required, environmentally friendly, non toxic and easy to use. Fire service approved.

Area of use:
Exterior

Substrates:
Concrete and composite compound, marker posts

Packing:
2.5 Litres

Physical Constants:
Colour: Yellow
(other colours on request)

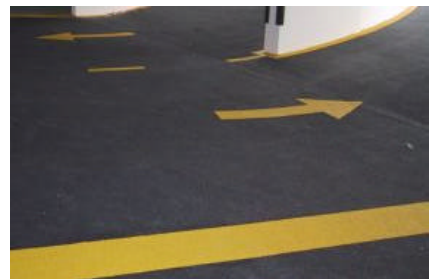
Finish: Satin

Volume solids: 45%

Theoretical spreading rate: 12 sq.metres per litre



Special purpose products formulated for Essex Fire and Water



Hardwearing Roadline Paint

CHLORINATED RUBBER, ROADLINE YELLOW

(Other road-marking colours on request)

Very hardwearing paint for concrete and metal. Suitable for road and manhole cover markings. Provides high visibility and durability. Easy to use. Provides a chemical resistant finish. Fire service approved.

Area of use:
Interior and exterior.

Substrates:
Concrete, manhole covers and road surfaces

Packing:
5 Litre

Physical Constants:
Colours: Yellow and white
(other colours on request)

Finish: Semi gloss

Volume solids : 55%

Theoretical spreading rate: 15 sq. metres per litre



Special colours available on request



Flag Post Marker Paint, water-based protection for indicator posts

*The theoretical spreading rates have been calculated for the stated volume solids and dry film thickness. A practical spreading rate will depend on the actual dry film thickness, the nature of the substrate, and the relevant consumption factor. The physical constants are subject to normal manufacturing tolerances.

SAFETY: Handle with care. Before and during use, observe all safety labels on packaging and paint containers, consult Material Safety Data Sheets and follow all local or national safety regulations.